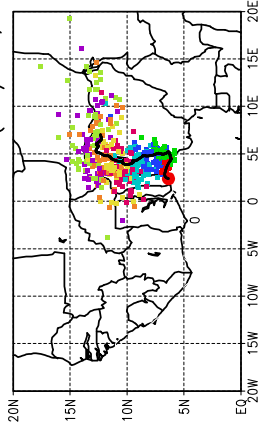
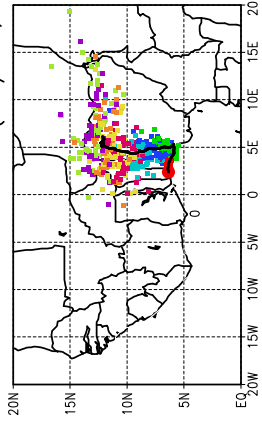


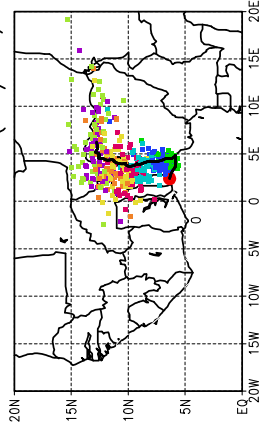
Ballons laches a J+12 h (20/06, 12 UTC)



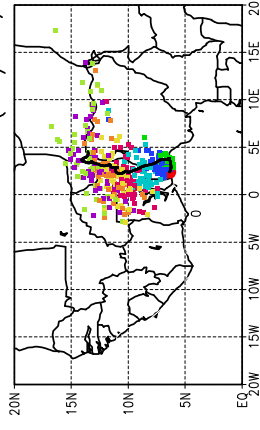
Ballons laches a J+18 h (20/06, 18 UTC)



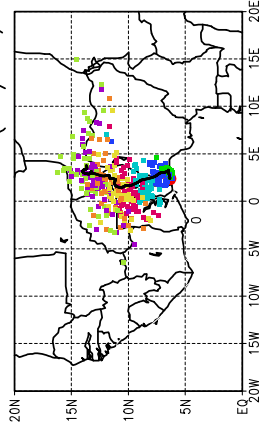
Ballons laches a J+24 h (21/06, 00 UTC)



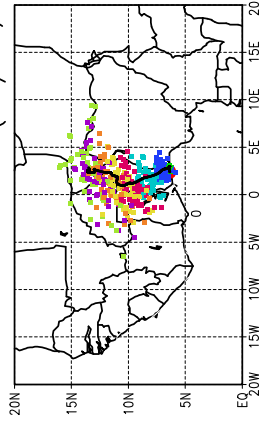
Ballons laches a J+30 h (21/06, 6 UTC)



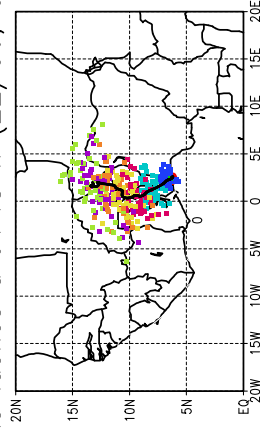
Ballons laches a J+36 h (21/06, 12 UTC)



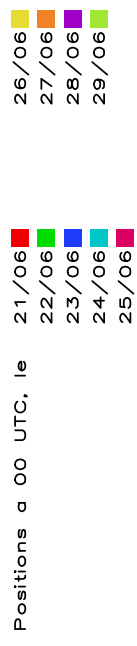
Ballons laches a J+42 h (21/06, 18 UTC)



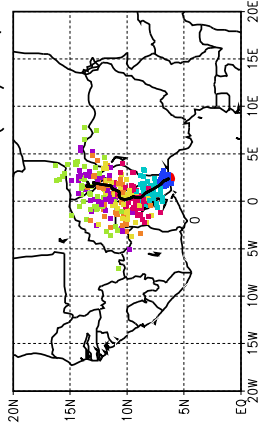
Ballons laches a J+48 h (22/06, 00 UTC)



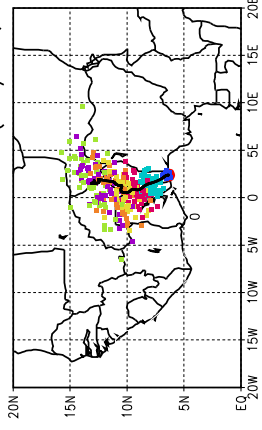
Jour J des Previs Meteo Proba: 20/06/2006 (00 UTC)
Pression : p = 850hPa (env. d = 1.02)



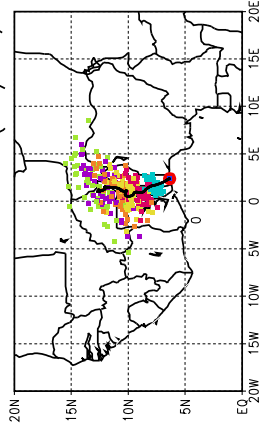
Ballons laches a J+60 h (22/06, 12 UTC)



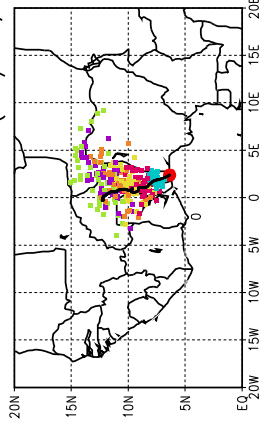
Ballons laches a J+66 h (22/06, 18 UTC)



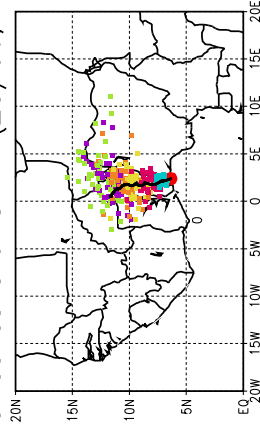
Ballons laches a J+72 h (23/06, 00 UTC)



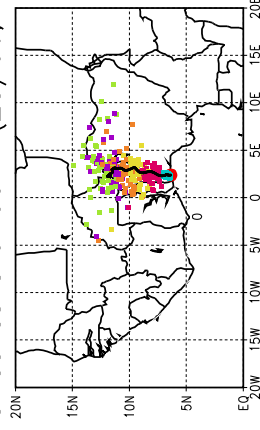
Ballons laches a J+78 h (23/06, 6 UTC)



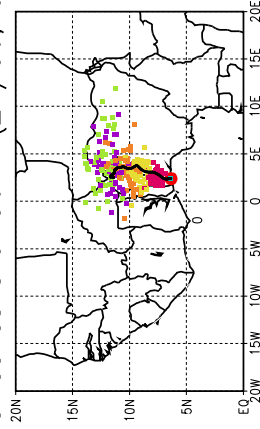
Ballons laches a J+84 h (23/06, 12 UTC)



Ballons laches a J+90 h (23/06, 18 UTC)



Ballons laches a J+96 h (24/06, 00 UTC)



Jour J des Previs Meteo Proba: 20/06/2006 (00 UTC)
 Pression : p = 850hPa (env. d = 1.02)

